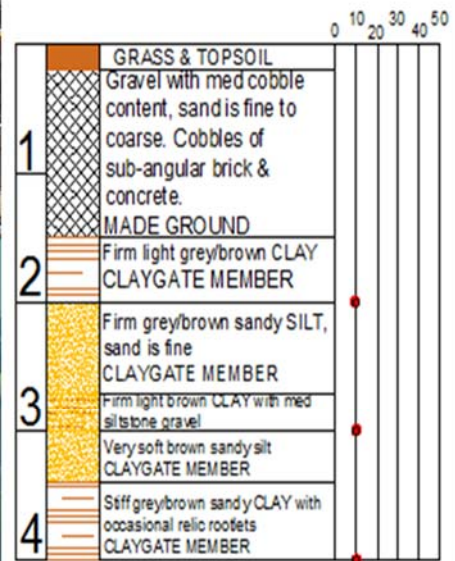


# Berryrange Silent Piler & Zero Piler Installation



## Borehole Information

### SPT Values



L604 / SMJ Sheet Pile @ 7.5m Long

<b>Project Location</b>	101-135 Kings Road, Brentwood, Essex
<b>Type of Project</b>	Housing
<b>Client</b>	Taylor Wimpey East London
<b>Duration of Work</b>	November '16— December '16
<b>Purpose of Piling</b>	Basement works for future Development
<b>Type of Pile</b>	SMJ 5.5m long, L604 x 6.0m and 7.5m long & SM-J @ 6m & 6.5m long
<b>Piling System</b>	WP150 Silent Piler & JZ100 Silent Zero Piler
<b>Particulars</b>	Silent Piling Method required. Vibration & Noise Sensitive area. Zero piling required due to existing structure.



Sheet Piling, Construction  
& Professional Design  
Services

Unit 7,  
The Oaks Business Village  
Revenge Road,  
Lordswood,  
Kent,  
ME5 8LF

TEL: 01622 794460  
FAX: 01634 863016  
Enquiries@berryrange.com  
www.berryrange.com

