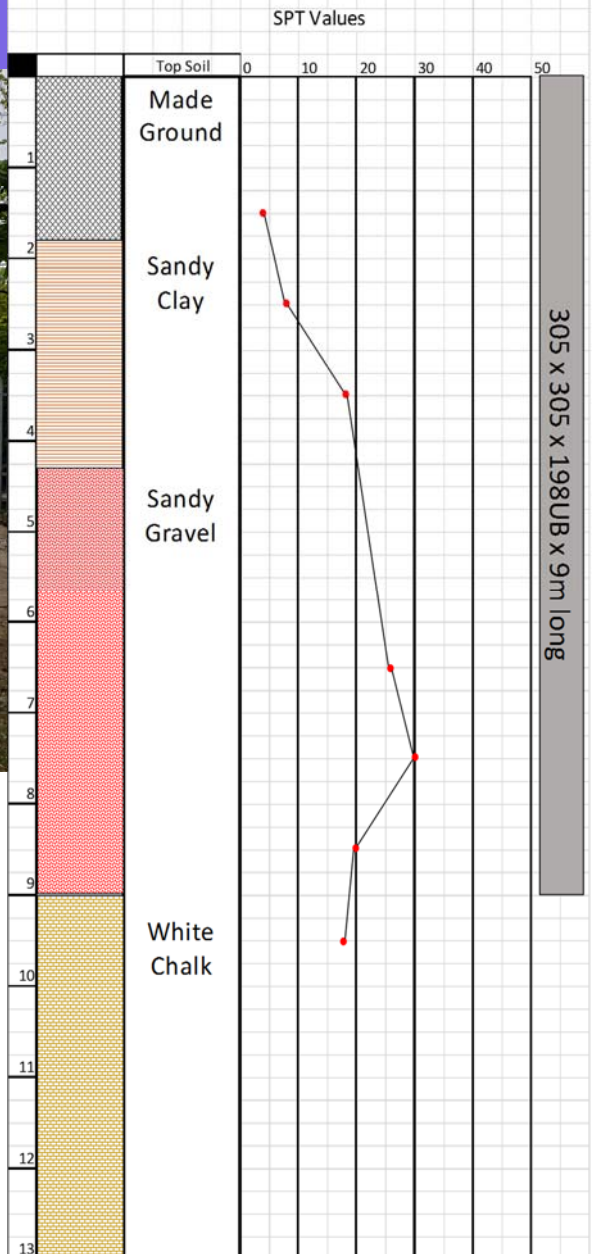


Movax Installation of H piles (Using Vibo & Drop Hammer Techniques)



Project Location	South London HV Upgrade, Bermondsey London
Type of Project	Switching Station for Network Rail
Client	BAM Nuttall
Duration of Work	April '17 - May '17
Purpose of Piling	Beams for stability in Kingpost System
Type of Pile	Galvanised 305 x 305 x198UB x 9m long
Piling Machine	Movax Piling Hammer & Excavator mounted Drop Hammer
Particulars	Movax required due to access and slope. Back driving required due to the stiff soils.

Borehole Information



Sheet Piling, Construction
& Professional Design
Services

Unit 7,
The Oaks Business Village
Revenge Road,
Lordswood,
Kent,
ME5 8LF

TEL: 01622 794460
FAX: 01634 863016
Enquiries@berryrange.com
www.berryrange.com

