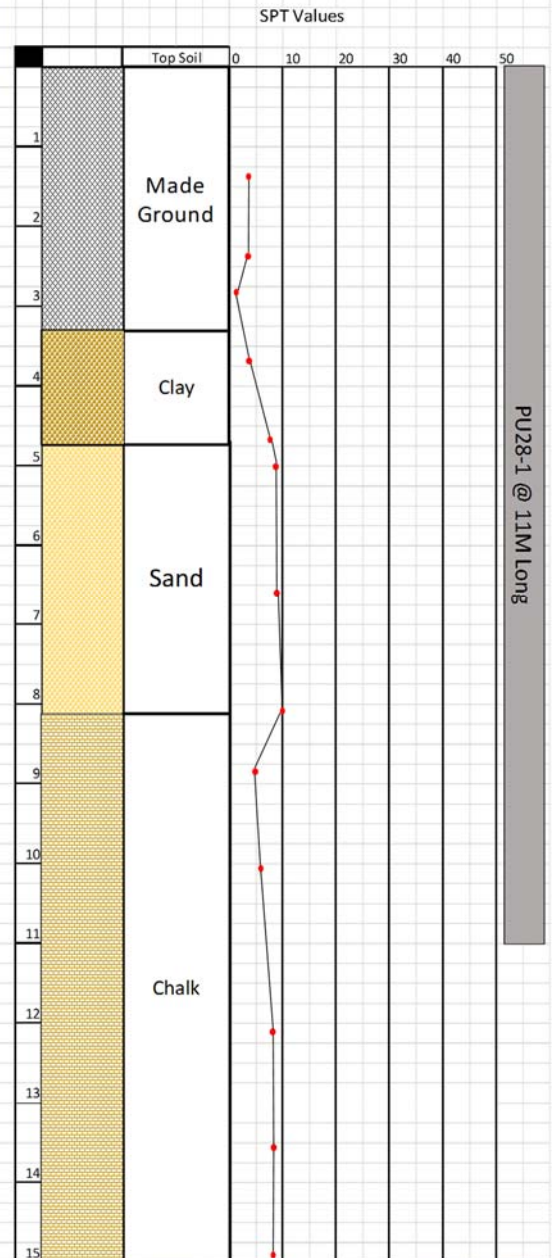


Movax installation



Project Location	St Annes Wharf, Norwich
Type of Project	Housing
Client	Project & Developments Ltd, Dunbar Assets Plc
Duration of Work	2.5 weeks
Purpose of Piling	Piling required as protection to river bend before new development
Type of Pile	PU28-1 @ 11.0m Long
Piling Machine	Excavator mounted Movax
Particulars	Scour protection for new build.

Borehole Information



**Sheet Piling, Construction
& Professional Design
Services**

Unit 7,
The Oaks Business Village
Revenge Road,
Lordswood,
Kent,
ME5 8LF

TEL: 01622 794460
FAX: 01634 863016
Enquiries@berryrange.com
www.berryrange.com

