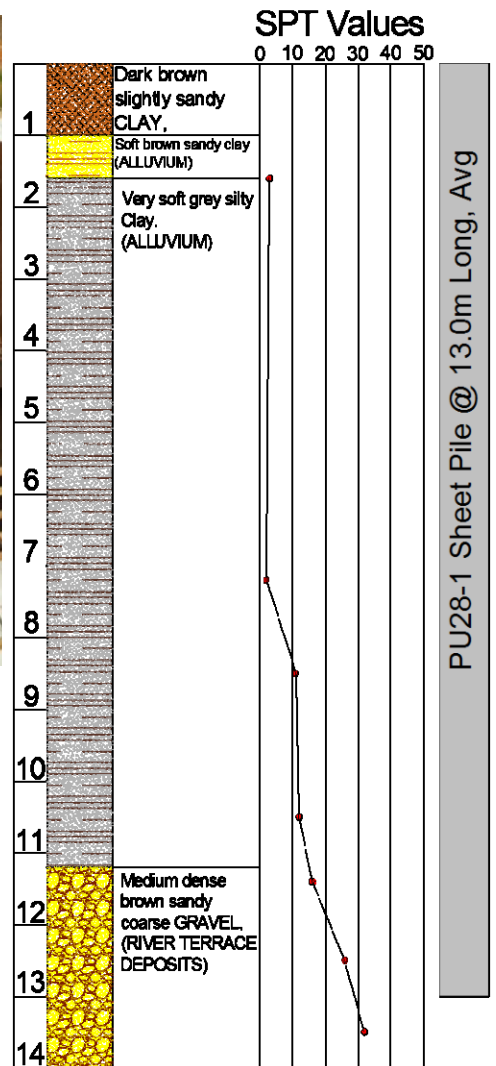


# WP150 Silent Piler Installation & Leader Rig Extraction



<b>Project Location</b>	Stanford-Le-Hope, Culvert
<b>Contract E Number</b>	E3848A
<b>Type of Project</b>	Deep Sea Berth Development
<b>Client</b>	Birse Civils, on behalf of DP World
<b>Duration of Work</b>	- 1 Week - 1 Week
<b>Piling Works</b>	~ Installation - July 2012 ~ Extraction - November 2012
<b>Purpose of Piling</b>	Temporary cofferdam for Culvert Construction
<b>Type of Pile</b>	PU28-1 Pile @ 12.0m — 14.0m
<b>Piling System</b>	Leader Rig & WP150 Silent Piler Installation
<b>Particulars</b>	Silent Piling Method required where High Voltage cable ran near the works, remainder was done with the Vibratory method Extracted with Leader Rig

## Borehole Information



Sheet Piling, Construction  
& Professional Design  
Services

Unit 7,  
The Oaks Business Village  
Revenge Road,  
Lordswood,  
Kent,  
ME5 8LF

TEL: 01622 794460  
Enquiries@berryrange.com  
www.berryrange.com

