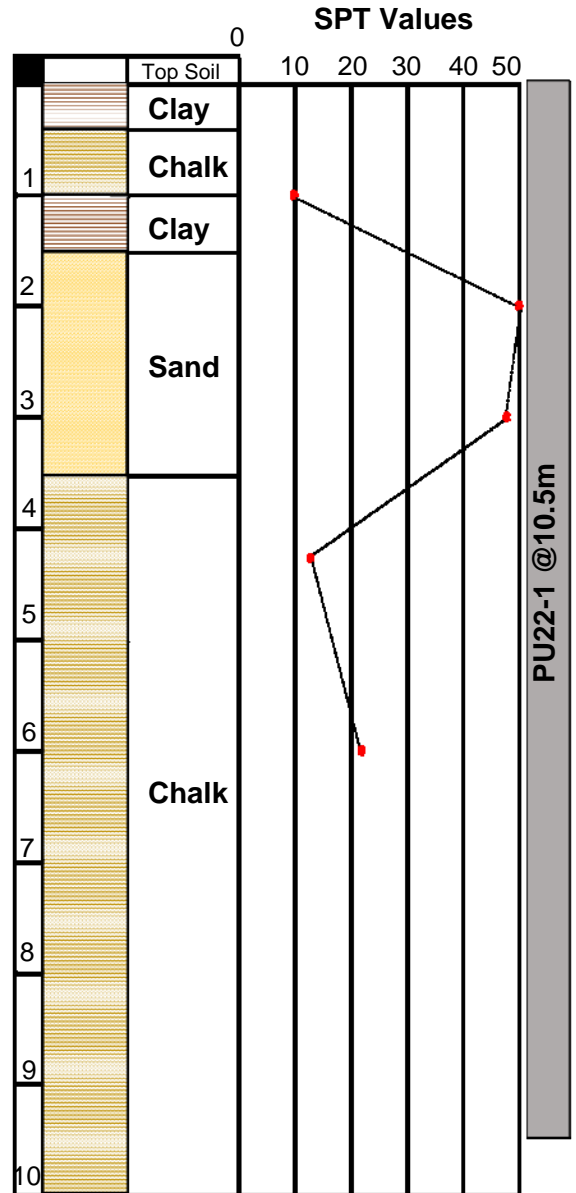


# WP150 Silent Piler with Water Lubrication



<b>Project Location</b>	Lannock Care Home, Letchworth, Hertfordshire
<b>Type of Project</b>	75 bed care home
<b>Contract E Number</b>	E4741A
<b>Client</b>	Hertfordshire County Council
<b>Duration of Work</b>	2 weeks
<b>Piling Works</b>	July 2015
<b>Purpose of Piling</b>	Support existing road for New Care Home
<b>Type of Pile</b>	PU22-1 @ 10.5m Long
<b>Piling Machine</b>	WP150 Silent Piler with water lubrication
<b>Particulars</b>	Noise and Vibration sensitive area. Silent piling method required.

## Borehole Information



Sheet Piling, Construction  
& Professional Design  
Services

Unit 7,  
The Oaks Business Village  
Revenge Road,  
Lordswood,  
Kent,  
ME5 8LF

TEL: 01622 794460  
Enquiries@berryrange.com  
www.berryrange.com

