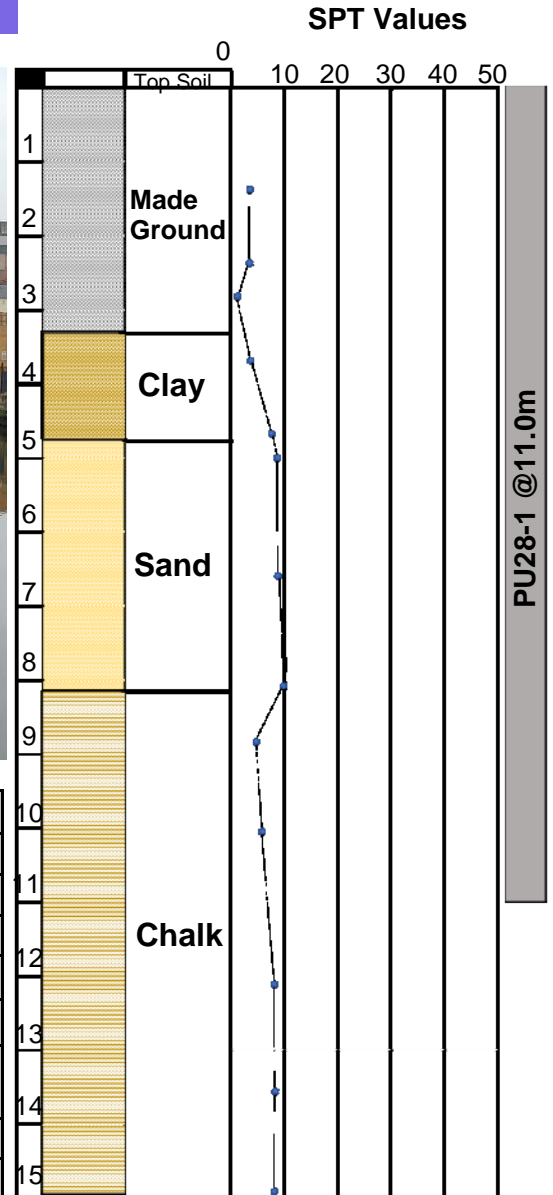


Excavator Movax Installation

Borehole Information



Project Location	St Annes Wharf, Norwich
Contract E Number	E5530A
Type of Project	Housing Development
Client	Project & Developments Ltd, Dunbar Assets Plc
Duration of Work	2.5 weeks
Piling Works	March 2016
Purpose of Piling	Piling required as protection to river bend before new development
Type of Pile	PU28-1 @ 11.0m Long
Piling Machine	Excavator mounted Movax
Particulars	Scour protection for new build.



**Sheet Piling, Construction
& Professional Design
Services**

Unit 7,
The Oaks Business Village
Revenge Road,
Lordswood,
Kent,
ME5 8LF

TEL: 01622 794460
Enquiries@berryrange.com
www.berryrange.com

