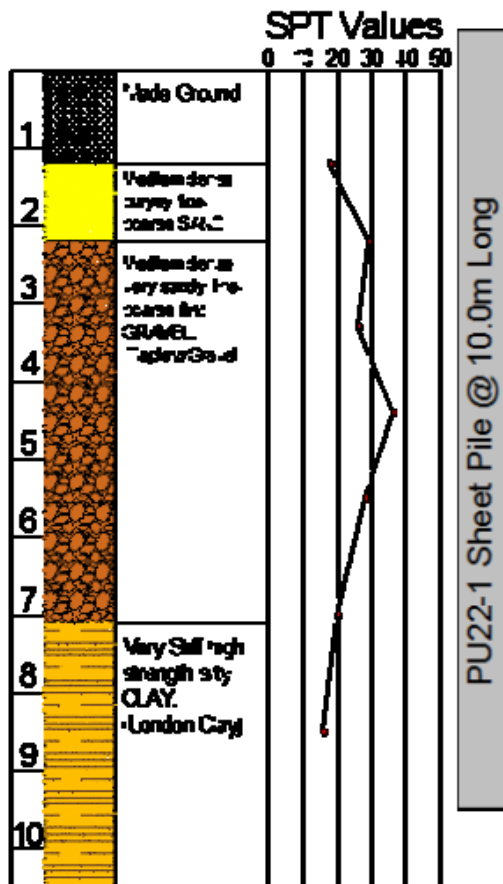


Leader Rig - Pre-Auger & Pile Installation Vibration Monitoring



Borehole Information



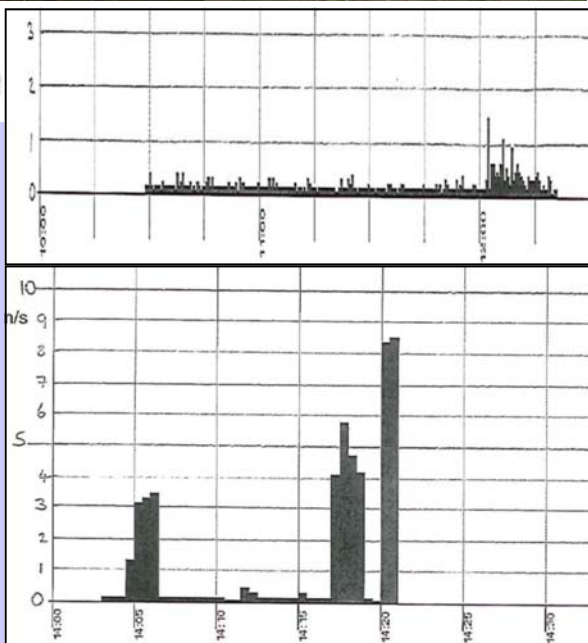
| | |
|-------------------------|---|
| Project Location | London Road, Barking |
| Type of Project | Vibration Monitoring Trial |
| Date | Nov '12 |
| Type of Pile | PU22-1 Steel Sheet Pile, L= 9.0m |
| Piling System | Leader Rig - Pre-Auger, Vibro-Installation & Extraction |
| Piling Machine | ABI 13/16 Leader Rig |



Sheet Piling, Construction
& Professional Design
Services

Unit 7,
The Oaks Business Village
Revenge Road,
Lordswood,
Kent,
ME5 8LF

TEL: 01622 794460
Enquiries@berryrange.com
www.berryrange.com



PRE-AUGERING

The monitoring of the pre-augering, 3.5m away varied between 0.475 - 1.58mm/sec

VIBRO-INSTALLATION

During the installation of 2 piles, the readings ranged between 3.5 - 6mm/sec

VIBRO-EXTRACTION

The extraction vibration was recorded shortly after with a peak reading of 8.65mm/sec